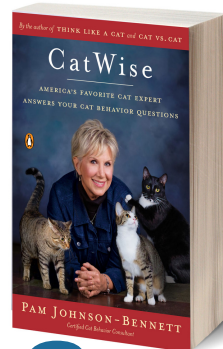


CATWISE



LITTER BOX BASICS

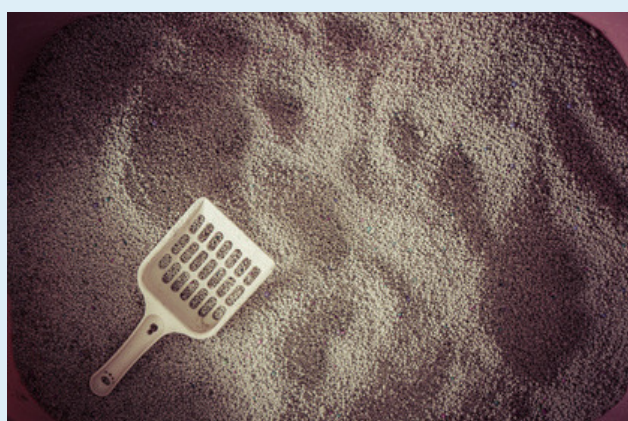


THE RIGHT SIZED BOX

The litter box should be 1 1/2 times the length of the cat from tip of the nose to base of the tail. Match the box to the size of your cat and not to the fact that you want to wedge it in a small area.

UNCOVERED IS BEST

Covered boxes concentrate the odor inside which makes it very unpleasant for a cat. Covered boxes also don't provide adequate escape potential and the cat inside could get ambushed while in there. Covered boxes are cramped and don't make the process of elimination very comfortable. They also tend to get scooped less often because it's more trouble to remove the lid.

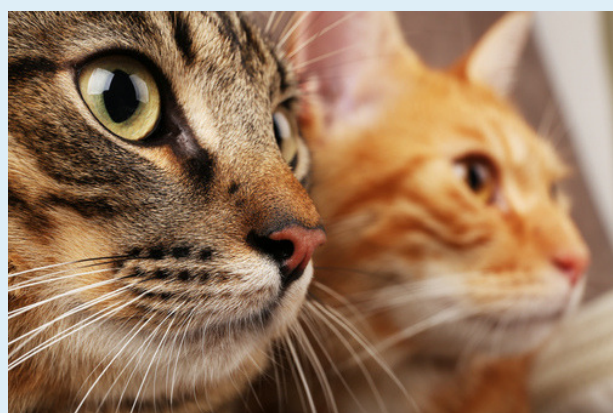


USE CAT-FRIENDLY LITTER

In general, cats prefer a soft, sandy substrate so stick to a scoopable litter. Texture matters to many cats and how the litter feels on the paw pads can make a difference between acceptance or rejection. The scoopable litter also makes it easier to do daily cleaning maintenance.

SCOOP AND CLEAN

Scoop the box at least twice a day. Your cat doesn't want to have to step over mounds of old waste each time he makes a trip to the box. Thoroughly clean the box and refresh with clean litter at least once a month if using scoopable litter. If you use non-clumping litter you need to thoroughly clean the box at least weekly, if not more often.



HAVE THE RIGHT NUMBER OF BOXES

You should have the same number of boxes as you have cats plus one extra for the house. It may mean extra cleaning but it's important to not stress cats out by having to share cramped litter box accommodations. Having an adequate number of boxes also helps alleviate multicat tension so one cat doesn't have to use the same box as a rival cat.

LOCATION IS IMPORTANT

The litter box shouldn't be near the food or water. Nobody wants to eat in the bathroom. For cats, this is a survival factor because cats bury their waste to avoid attracting predators. In a multicat household, spread the boxes around so there's one conveniently located for each cat in preferred areas. This way, a cat doesn't have to cross through another cat's area when nature calls.

